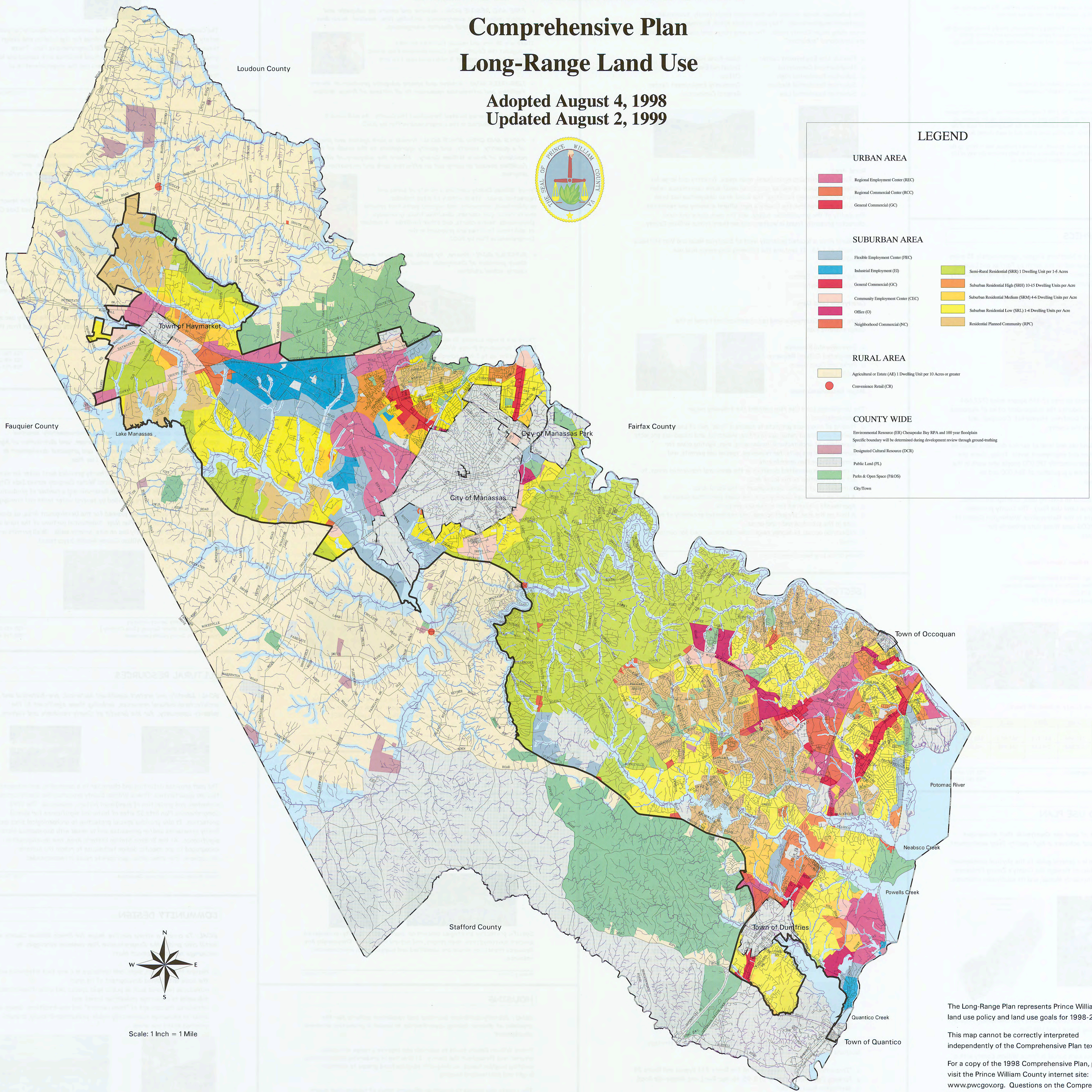


PRINCE WILLIAM COUNTY

Comprehensive Plan

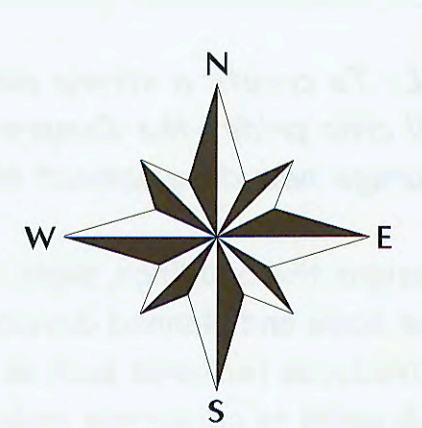
Long-Range Land Use

Adopted August 4, 1998
Updated August 2, 1999



LEGEND

URBAN AREA	
[Pink Box]	Regional Employment Center (REC)
[Orange Box]	Regional Commercial Center (RCC)
[Red Box]	General Commercial (GC)
SUBURBAN AREA	
[Light Blue Box]	Flexible Employment Center (FEC)
[Blue Box]	Industrial Employment (IE)
[Light Green Box]	General Commercial (GC)
[Light Orange Box]	Community Employment Center (CEC)
[Light Yellow Box]	Office (O)
[Light Red Box]	Neighborhood Commercial (NC)
[Light Green Box]	Semi-Rural Residential (SRR) 1 Dwelling Unit per 1-4 Acres
[Orange Box]	Suburban Residential High (SRH) 10-15 Dwelling Units per Acre
[Yellow Box]	Suburban Residential Medium (SRM) 4-6 Dwelling Units per Acre
[Light Yellow Box]	Suburban Residential Low (SRL) 1-4 Dwelling Units per Acre
[Light Orange Box]	Residential Planned Community (RPC)
RURAL AREA	
[Light Yellow Box]	Agricultural or Estate (AE) 1 Dwelling Unit per 10 Acres or greater
[Red Dot]	Convenience Retail (CR)
COUNTY WIDE	
[Light Blue Box]	Environmental Resource (ER) Chesapeake Bay RFA and 100 year floodplain Specific boundary will be determined during development review through ground-truthing
[Light Green Box]	Designated Cultural Resource (DCR)
[Light Blue Box]	Public Land (PL)
[Light Green Box]	Parks & Open Space (P&OS)
[Light Blue Box]	City/Town



Scale: 1 Inch = 1 Mile

The Long-Range Plan represents Prince William County land use policy and land use goals for 1998-2020.

This map cannot be correctly interpreted independently of the Comprehensive Plan text.

For a copy of the 1998 Comprehensive Plan, please visit the Prince William County internet site: www.pwcgov.org. Questions on the Comprehensive Plan can be directed to the Prince William County Planning Office at (703) 792-6830.